

○ Ascender 32 - Ref. ASC3204

Powerful multi-screen Seamless Switcher based on **Analog Way's** new **LiveCore™** platform, offering state-of-the-art processing, Soft Edge and 4K capabilities for top-notch presentations



Web RCS



INPUTS



OUTPUTS



FEATURES



Ascender 32 at a glance

- ▶ New **LiveCore™** platform
- ▶ 12 Seamless inputs and 42 input plugs
- ▶ Independent Preview/Mosaic/Monitoring output
- ▶ Full live Preview of all sources (Preview/Mosaic/Monitoring)
- ▶ Customization of monitoring layouts (Up to 8 templates stored)
- ▶ 4 true-Seamless scaled layers + 1 native background layer per output
- ▶ Advanced Layer Management
- ▶ Rotation capability in output (step by 90 degrees)
- ▶ Outstanding visual effects
- ▶ Collaborative architecture
- ▶ Ruggedized and heavy-duty design
- ▶ User-friendly and intuitive Graphic Interface
- ▶ Remote Services
- ▶ Additive modularity

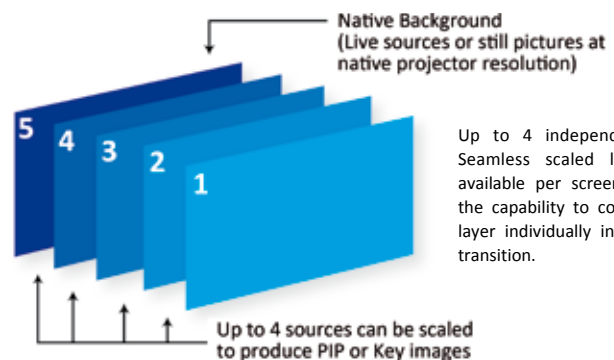
To Control Ascender 32

- ▶ Web-based Remote Control Software (Web RCS)
- ▶ VRC300: Vertige™
- ▶ SB-80: Shot Box
- ▶ Crestron's Modules: 2 or 3-Series*
- ▶ AMX's Modules*

*Available on www.analogway.com

Option

- ▶ OPT-SPS: Swappable Power Supply
- ▶ OPT-LINK: Replacement LiveCore™ Link Cable (spare)
- ▶ OPT-KIT3xLINK: Set of 3 LiveCore™ Link Cables
- ▶ OPT-4K-ASC3204: 4K processing upgrade for ASC3204 (4K@30Hz 4:4:4/@60Hz 4:2:0/@60Hz 4:4:4)
- ▶ SPU001: Secure Power Unit
- ▶ UP-ASC3204: Upgrade from Ascender 32 to Ascender 48⁽¹⁾
- ▶ 500132: Extension Warranty 2 years (5 years total)



⁽¹⁾ The 4K resolution and management of the Perspective Layers are not included in the hardware upgrade



ANALOG WAY®
Pioneer in Analog. Leader in Digital

Key features

► 12 Seamless inputs and 42 input plugs

- 6 x HDMI
- 9 x DVI-I (3 DVI Dual Link included)
- 3 x DisplayPort (4-Lanes)
- 12 x 3G/HD/SD-SDI
- 12 x Universal Analog (6x HD15 & 6xDVI-A)

► 4 outputs with 5 output plugs

- Universal Analog (HD15 & DVI-A)
- DVI-I (DVI Dual Link available on output #1 and #3)
- 3G/HD/SD-SDI
- Video Optical SFP module cage

► Features & Effects

- Up to 4 true-Seamless scaled layers per screen
- Independent Native Background
- 144 presets
- 50 Frames + 50 Logos memory bank
- Frames and Logos: fully resizable
- True A/B mix
- Output capability up to 2560x1600 and 4K
- Customizable 4-display layouts: Full Preview, Live Mosaic, Monitoring and Recording
- Display configurations: Mixer, Hybrid, Hard Edge & Soft Edge
- Additive modularity: combine 2 Ascender 32 to share/add inputs & outputs up to 24x8
- Layer border: Edge/Smooth/Shadow/Smooth Edge (Edge: color/width/height)
- New tool box for layers: Transitions, Effects, Speed, Timing, Faders, Strobe, Mirror,...
- Numerous effects: Cut, Dissolve, Slide, Wipe, Stretch, Circle, Depth, Flip, Flying Curve, Background Cut, Transparency, Luma/Chroma Key, DSK
- New Web-based Remote Control Software for multiple users: **Web RCS**
- Remote Tools
- Remote Services

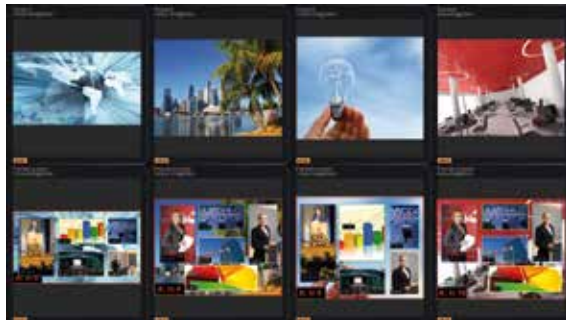
Web RCS



- The **Web RCS** offers a user-friendly graphic interface consisting of 3 independent sections: Setup, Edit and Live. A Preconfig. mode indicates how to easily configure the device step by step.
- With dynamic snapshots of the connected sources available in the interface, the intuitive dashboard allows operators to fully prepare their shows and control them live during their events.
- An innovative Sequences mode allows easy organization of presets through drag and drop operation.

In addition to its four main outputs, **Ascender 32** features an independent Dual-Link output for monitoring purposes. This output offers versatile and customizable display options, ensuring effective monitoring and flawless show control. All images are live and can be labeled through the Web Remote Control Software. Additional information on each source is also available directly on the live video windows.

Full Preview



Live Mosaic



Dimensions:

- D 21.41" x W 17.51" x H 6.97" ("Rack ears" not included)
- D 544 mm x W 444.8 mm x H 177 mm ("Rack ears" not included)

Weight:

- 19 kg
- 41.89 lbs

Power Supply:

100-240 VAC ; 4.8A ; 50/60Hz ; 285 W

Supplied with:

- 1 x Power supply cord
- 1 x Ethernet cross cable (for device control)
- 1 x MCO 10 pin connector
- 1 x Web-based Remote Control Software included and hosted on the device
- 1 x Rack mount kit (front ears and rear support)
- 1 x User Manual (PDF version)*
- 1 x Quick Start Guide*

Warranty:

3-year warranty on parts and labor back to factory.



* All User Manuals and Quick Start Guides are also available on www.analogway.com

① Specifications subject to change without prior notice

All technical specifications are available on our website